

# Video Measuring Machine VX3300D



Item No.: VX3300D

Product name: Video Measuring Machine

Image Sensor: 5M CMOS

Field of view : W130mm×L230mm & W200mm×L300mm

Depth of Field: 3mm & 30mm

Working Distance: 120mm

Accuracy:  $\pm 2\mu\text{m}$  (Without stitching) &  $\pm 5\mu\text{m}$  (Without stitching)

Resolution: 0.1 $\mu\text{m}$

Loading Capacity: 5kg

Size (LxWxH): 531×503×731mm

Weight: 75kg

## Details

### § Description §

Based on visual measurement principle with precision image analysis algorithms, equipped with double telecentric optical lens with high depth of field, VX series of Flash Measuring Machines achieve fast dimensional measurement by one-key operation. VX series are suitable for precise dimensional measurement in the fields of machinery, electronics, molds, injection molding, hardware, rubber, low-voltage electrical appliances, magnetic materials, precision stamping, connectors, connectors, terminals, mobile phones, home appliances, printed circuit boards, medical equipment, watches, cutting tools, etc.



## § Parameters

Model		VX3300	VX3300D	
Image Sensor		5M CMOS		
Monitor	Built-in	10.4" LCD (XGA:1024×768)		
	Outside	24" LCD (XGA:1920×1080)		
Acceptance Lens		Object Space Telecentric Lens		
Light	Ring	Four-segment illumination (White Light/Green Light)		
	Bottom	Telecentric transmission illumination (Green Light)		
Field of View	Large field	200mm×300mm (4 Angle R50)	200mm×300mm (4 Angle R50)	
	High precision	/	230mm×130mm	
Resolution		0.1μm		
Repeatability of Image Meas.	Large field	Without Stitching <sup>*1</sup>	±1μm	±1μm
		With Stitching <sup>*2</sup>	±2μm	±2μm
	High precision	Without Stitching <sup>*1</sup>	/	±0.5μm
		With Stitching <sup>*2</sup>	/	±1.5μm
Accuracy of Image Meas.	Large field	Without Stitching <sup>*1</sup>	±5μm	±5μm
		With Stitching <sup>*2</sup>	±(7+0.02L) μm	±(7+0.02L) μm
	High precision	Without Stitching <sup>*1</sup>	/	±2μm
		With Stitching <sup>*2</sup>	/	±(4+0.02L) μm
Height Meas. (Optical probe) (Optional)	Measuring Range (XY)		120mm×110mm	
	Max Hole-Depth Ratio(h/φ)		1.5	
	Dia. of Beam		Φ38μm	
	Resolution		0.25μm	
	Z Non-movement	Range(Z)	±3.5mm	
		Accuracy	±2μm	
	Z Movement	Range(Z)	70mm	
Accuracy		±(6+0.01H) μm, H is Z moving height in mm		
Software		Vision X		
XY Object Table	X Travel range		210mm (Motorized)	
	Y Travel range		110mm (Motorized)	
	Loading Capacity		5kg	
Z-Axis Travel range		75mm (Motorized)		
Size (LxWxH)		(531×503×731) mm		
Weight		74kg	75kg	
Input		AC100~240V/50~60Hz		
Working Environment		Temp.10°C~35°C, Humidity 30%~80%, Vibration<0.002g, Less than15Hz		

Remark:

\*1 In the focus position, the environment temperature is +20 °C ± 1.0 °C

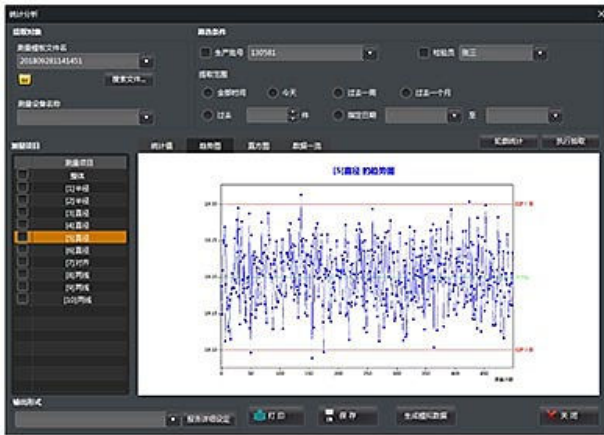
\*2 In the focus position, the environment temperature is +20 °C ± 1.0 °C, and the load on the table is 2 kg or less; L is the moving range of the table (mm)



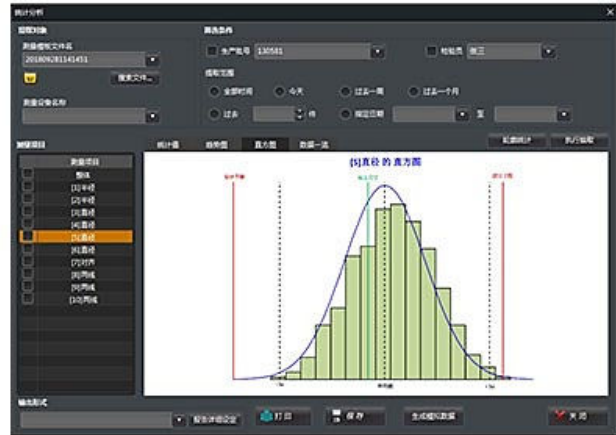
## Statistics

The trend graph displays the regular trend of the measured values, such as the monotonic and periodic change of the measured values, which can be used for monitoring the abnormality of the production process of producing equipment. Reflecting the status and distribution of fluctuations in product quality, the histogram can intuitively expose information about the quality situation in producing process, which can be used to predict product quality and failure rate.

Through quality diagnosis and analysis with statistical methods, SPC can monitor the product quality and changing trend of the producing process. With SPC we can find the preventive solution in the producing process, so that the subsequent inspection and repair are reduced. Consequently, the producing process control and product quality improvement are achieved.



Trend Graph



Histogram

## More Applications



Metal



Gasket



PCB



Phone accessories



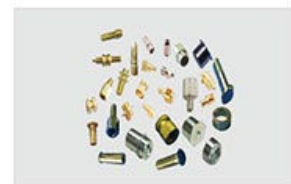
Magnetic parts



Spring



Bearing



Instrument accessorie